

CAST

27 Tasma Street, North Hobart, Tas 7000

03 6233 2681

info@castgallery.org

www.castgallery.org

gallery hours Wed - Sun 12 - 5



new art for new audiences

GALLERY DIMENSIONS

□

General dimensions

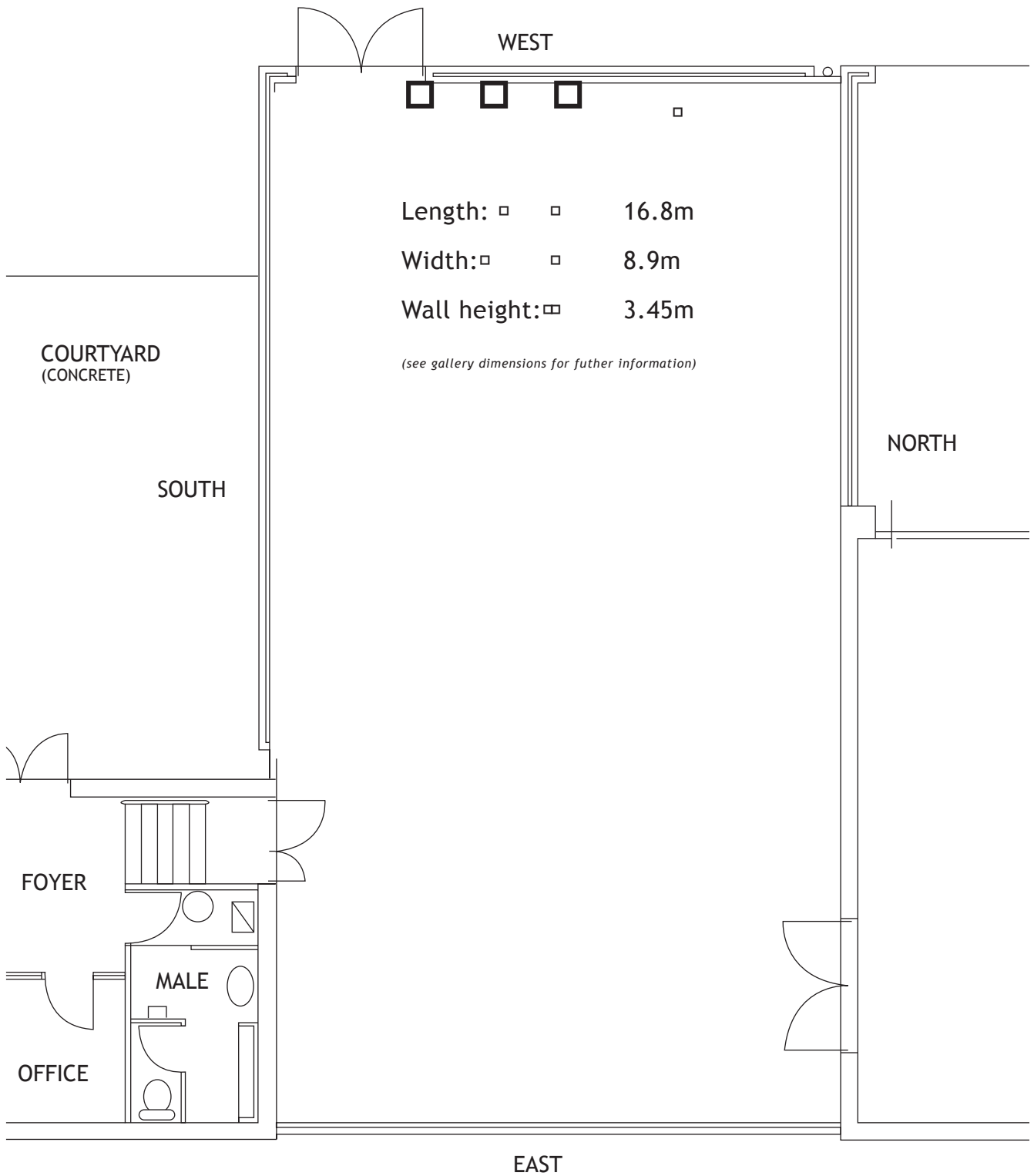
Length:	▣	□	□	□	16.8m
Width:	□	□	□	□	8.9m
Wall height:	□	□	□	□	3.45m
Ceiling height > eastern end:	□	□	□	□	4.5m
Ceiling height > western end:	□	□	□	□	3.75m
Grid height:	□	□	□	□	3.3m
Light track height:	□	□	□	□	3.34m

Access

Western door > to exterior:	□	□	□	□	h > 2.36m, w > 1.96m (inset 23cm)
□	□	□	□	□	distance from southern wall > 11cm
Northern door > to store room:	□	□	□	□	h > 2.36m, w > 2m (no inset)
□	□	□	□	□	distance from eastern wall > 40 cm
Southern door > entry door:	□	□	□	□	h > 2.36m, w > 1.1m (no inset)
□	□	□	□	□	distance from eastern wall > 3.54cm
Wall surface:	□	□	□	□	Plasterboard over structural plywood
□	□	□	□	□	(except for top 10cm > plasterboard only)
Floor:	□	□	□	□	Polished wood
Grid type:	□	□	□	□	Pipe grid (with relocatable components)
Lighting:	□	□	□	□	Single perimeter track - Erco
□	□	□	□	□	Track approx 1m from wall
□	□	□	□	□	Combination of wall wash floods and spots
Gallery panels:	□	□	□	□	7 panels: h > 3.23m, w > 1.2m
□	□	□	□	□	MDF 3mm over oak frame
Climate control:	▣	□	□	□	No
Heating:	□	□	□	□	Hanging radiant heaters
Cooling:	▣	□	□	□	No
Power:	□	□	□	□	Drop down working outlets
□	□	□	□	□	Wall power outlets all walls
□	□	□	□	□	3 floor outlets on central line (concealed)

Gallery may be modified as required to suit installation.

All modifications to gallery fabric and any damage are the responsibility of the artist to set right and must be negotiated with the Director prior to undertaking.



27 Tasma Street, North Hobart, Tasmania 7000

03 6233 2681

info@castgallery.org

www.castgallery.org

gallery hours Wed - Sun 12 - 5

CAST gallery plans